



Monitor Water Powered Oscillating Monitors Part No. CWPOM

DESCRIPTION

The Chemguard water powered oscillating monitor is designed to automatically discharge foam/water solution over a specific design area upon system activation. It is suitable for use in high risk areas such as tank farm facilities, aircraft hangars and with the unit having a low profile, heliports.

The oscillating mechanism is driven by a water drive wheel connected to a double reduction gearbox. To operate the water drive wheel, a small quantity of foam/water solution is diverted from the monitor inlet. The monitor requires no external wiring or hydraulic control for operation. The water drive wheel design is unique in that the flow of foam/water solution used, does not require an inlet filter. This makes the oscillating mechanism highly reliable and less likely to fail.

The monitor is suitable for use with either an air-aspirating foam nozzle or a non air-aspirating type with flows up to 1250 gpm. (4732 lpm) at 100 psi (7 bar).

The angle of elevation and arc of oscillation are field adjustable and can be set and locked in position. The monitor can be set to oscillate over a range of 0° - 120° and the oscillation arc can be set anywhere within the 360° field of operation. Elevation range of the unit is between +80° and -40°.

SPECIFICATION

The monitor shall be completely self-contained requiring no outside electrical connections or hydraulic controls to ensure correct operation. The oscillating mechanism shall be driven by a water drive wheel and the foam/water solution causing operation of the oscillating mechanism shall not require filtering. The monitor and body

of the oscillating unit shall be manufactured of brass. The water drive wheel is bronze with bronze supply gate valve.

FEATURES

- U.L. listed with CMNB350, CMNB500, CMNB750
- Unique water drive wheel design
- Arc of oscillation adjustable via 6 set points
- Speed of oscillation adjustable from 0° - 30°/sec. (24° /sec. @ 100 psi)
- Manual override capability with full 360° rotation
- Minimum operating pressure 50 psi (3.5 Bar)
- Maximum operating pressure 200 psi (14 Bar)
- Monitor water way diameter 3" (75 mm)
- Monitor inlet 4" (100 mm) 150 LB F.F. brass flange with 2 1/2" MNHT outlet
- Flow of water/foam solution through water drive wheel at 50 psi (3.5 Bar) 5 gpm (19 lpm) 100 psi (7 Bar) 10 gpm (38 lpm)
- Double reduction gearbox has an oil bath. Grease fittings and two rows of stainless steel ball bearings at all rotation joints on monitor
- All brass and stainless steel construction
- Monitor has one handle for manual control.

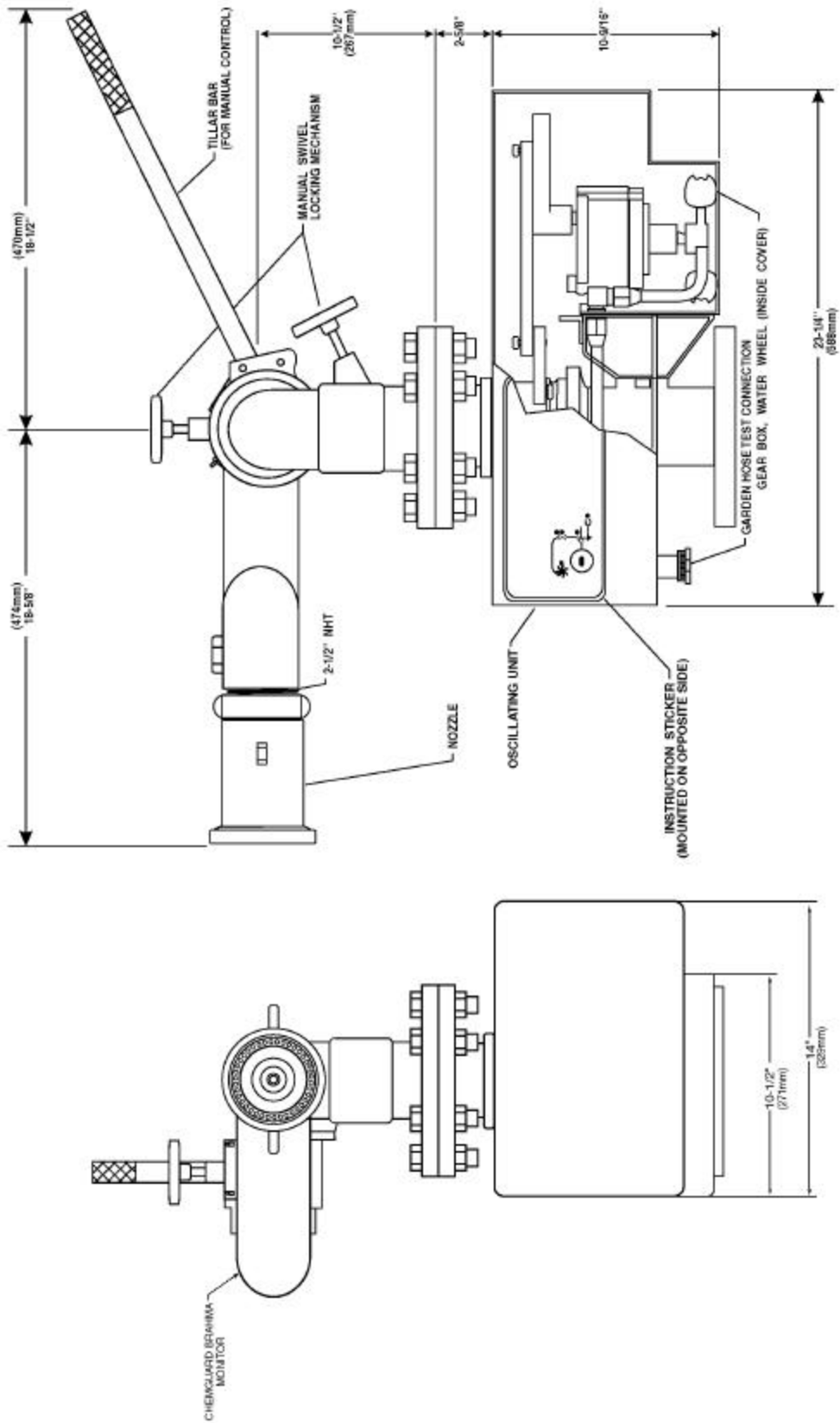
- Unit equipped with a garden hose test connection. This allows functional check of the oscillation mechanism without system flow

ORDERING INFORMATION

MODEL

CWPOM Oscillating monitor
(Nozzle sold separately)

Shipping weight 120lbs.



WATER POWERED OSCILLATING MONITOR

CHEM GUARD INC. 204 S. 6th Avenue • Mansfield, Texas, USA 76063 • (817) 473-9964 • FAX (817) 473-0606