

Monitor Nozzles Constant Flow Part No. CMNB, CMNB1000

DESCRIPTION

Chemguard Monitor Nozzles are constructed of corrosion resistant brass. These units are of rugged construction making them ideal for use in marine, offshore or any corrosive environment. Each nozzle is a single gallonage, constant flow device in any discharge pattern. All are suitable for use with water or AFFF solution.

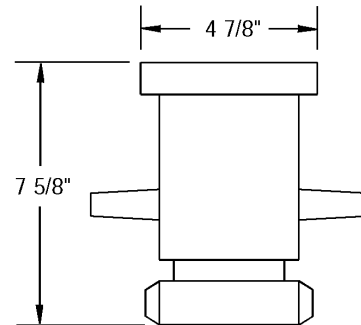
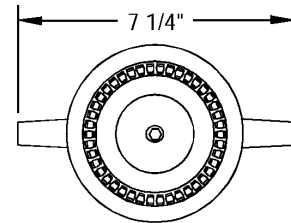
FEATURES

- Multiple gallonage selections available 350-500-750-1000 gpm
- Grease fittings for lubrication
- 2 1/2" Female NST swivel base
- Field adjustable flow rate (Model CMNB)
- Nozzles are fitted with teeth for greater dispersion of the water stream into a fog pattern

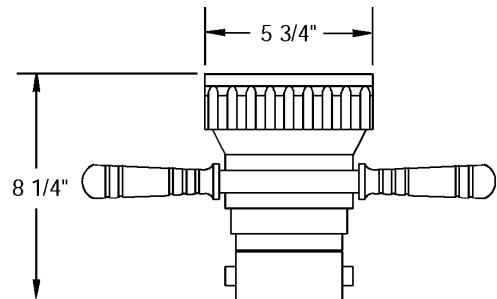
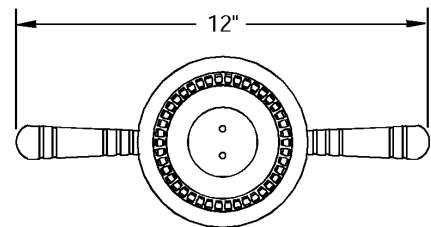
ORDERING INFORMATION

MODEL

CMNB 350, 500, 750, gpm Monitor Nozzle
CMNB1000 1000 gpm Monitor Nozzle



CMNB 350, 500, 750



CMNB1000

MNrv1199

MONITOR NOZZLES

	NOZZLE PRESSURE psi	FLOW gpm	EFFECTIVE RANGE feet	OVERALL RANGE feet
350 gpm	80	305	130	137
	100	350	145	152
	120	380	150	158
500 gpm	80	460	165	173
	100	500	185	200
	120	565	195	210
750 gpm	80	670	210	225
	100	750	240	260
	120	815	245	260
1000 gpm	80	945	240	258
	100	1000	265	280
	115	1075	275	293

- Effective range is taken to the center point of the falling water footprint.
- Overall range is taken to the point where the final water droplets land.

The above discharge distances were established in ideal weather conditions with the nozzle at a 32° elevation above the horizontal. Ranges can vary depending on the weather conditions.