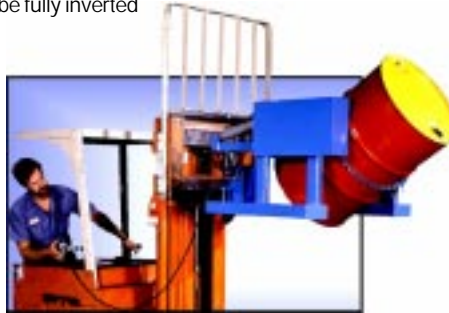


### BATTERY POWERED DRUM TILT CONTROL

**Model 285A-BP - Full Drum Capacity 1,200 Lb., Half-full capacity\* 600 Lb.**  
12V Battery Powered drum tilt for operator to control drum pouring with push-button ease while seated in truck. Drum tilt may be started, stopped or reversed at any point in the 180 degree range. The drum can be fully inverted for complete drainage.

Model 285A-BP Fork Lift-Karrier has its own battery. No power connection or truck modification is required. Charger is included for wall or shelf mount.

Handle 55 gallon steel drum. Use Morse 55/30 Series Adaptors for smaller diameter drum. Use E14 Fiber Drum Strap with appropriate size 55/30 Series Adaptor for fiber or steel drum. Ship dimensions: L 39" W 41" H 28". Ship weight: 395 Lb.



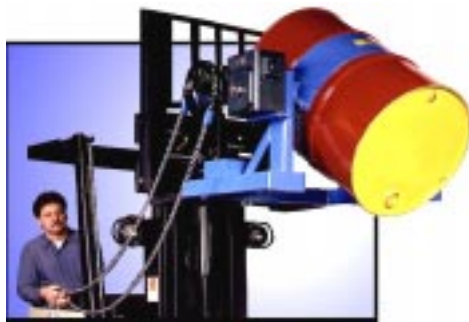
### 285 SERIES

- Add drum handling to your fork truck
- Simple to raise and dispense from drum
- Enable controlled pouring
- Attach and detach quickly
- No tools needed
- Speed up work
- No large expenditures
- No need to modify your truck
- No electric or hydraulic connections
- Eliminate backbreaking labor
- Eliminate dangerous, makeshift methods

### MANUAL DRUM TILT CONTROL FORK LIFT-KARRIERS

Standard models have pull chain and chain wheel for manual drum tilt control from seat of fork truck. Pull chain loop is 20' long with 10' drop. Hand crank drum tilt control options are also available. Further information about options and features on side 2.

**285GR Series - Extra Heavy-Duty: Full Drum Capacity 2,000 Lb., Half-full drum capacity\* 1,000 Lb.**



Extra Heavy-Duty models feature a 2-stage worm gear speed reducer for a 150:1 mechanical advantage for ease and control when tipping heavy drum. Handle 55 gallon steel drum. Use 55/30-19GR Adaptor for 30

gallon steel drum. Model 285G-GR is Extra Heavy-Duty model with 3-piece saddle.

Model 285GM-GR is made with spark resistant parts and 3-piece saddle. Ship dimensions: L 45" W 33" H 23"

#### 285GR SERIES EXTRA HEAVY-DUTY FORK LIFT-KARRIERS

| MODEL #  | DESCRIPTION                                  | ADAPTORS ACCEPTED | SHIP WEIGHT |
|----------|--|-------------------|-------------|
| 285A-GR  | 55-Gal. steel                                | 55/30-19GR        | 261 Lb.     |
| 285G-GR  | 55-Gal. steel, 3-Pc. Saddle                  | 55/30-19GR        | 311 Lb.     |
| 285GM-GR | 55-Gal. steel, 3-Pc. Saddle, Spark Resistant | Special           | 311 Lb.     |

\* Half-full rating is an indication of the capacity for tilting unbalanced, bottom-heavy drum. A partially full drum with an unbalanced and shifting load is harder to tilt than a full drum.

**285HD Series - Heavy-Duty: Full Drum Capacity 1,500 Lb., Half-full drum capacity\* 800 Lb.**



Heavy-Duty models have 30:1 gearing with an extra 2:1 sprocket set to achieve 60:1 ratio for high capacity, fine drum tilt control. Standard model has pull chain and chain wheel for tilt control from fork truck. Ship dimensions: L 40" W 29" H 24"  
Model 285A-HD shown with Option X01-285HD Hand Crank with gear covers and MORStop Tilt-Brake to automatically prevent unwanted drum rotation. Handle 55 gallon steel drum. Use 55/30 Series Adaptors for smaller diameter drum.

Model 285A/E-HD has E14 Fiber Drum Strap. Use with appropriate size 55/30 Series Adaptor for fiber or steel drum. Model 285G-HD has 3-piece saddle.

Model 285AM-HD is made with spark resistant parts.

Model 285A-HDPS Heavy-duty Kontrol-Karrier for plastic or steel drum has a bracket to prevent plastic drum from slipping in holder (shown on side 2).

#### 285HD SERIES HEAVY-DUTY FORK LIFT-KARRIERS

| MODEL #   | DESCRIPTION                                     | ADAPTORS ACCEPTED | SHIP WEIGHT |
|-----------|---|-------------------|-------------|
| 285A-HD   | 55-Gal. steel                                   | 55/30 Series      | 162 Lb.     |
| 285A/E-HD | 55-Gal. steel or fiber                          | 55/30 Series      | 164 Lb.     |
| 285G-HD   | 55-Gal. steel, 3-Pc Saddle                      | Special           | 172 Lb.     |
| 285AM-HD  | 55-Gal. steel, Spark Resistant                  | 55/30M Series     | 162 Lb.     |
| 285A-HDPS | 55-Gal. plastic or steel up to 900 Lb. (side 2) | 55/30 Series      | 213 Lb.     |

**285 Series - Standard Duty: Full Drum Capacity 800 Lb., Half-full drum capacity\* 500 Lb.**



Basic Fork Lift-Karriers have 30:1 ratio geared drum tilt control. Accept 55/30 Series Adaptors for use with smaller diameter drum. Ship dimensions: L 40" W 29" H 24"

Model 285A/E has E14 Fiber Drum Strap. Use with appropriate size 55/30 Series Adaptor for fiber or steel drum. Model 285G has 3-piece saddle. Model 285A-M is made with spark resistant parts.

#### 285A SERIES STANDARD DUTY FORK LIFT-KARRIERS

| MODEL # | DESCRIPTION                    | ADAPTORS ACCEPTED | SHIP WEIGHT |
|---------|--------------------------------|-------------------|-------------|
| 285A    | 55-Gal. steel                  | 55/30 Series      | 149 Lb.     |
| 285A/E  | 55-Gal. steel or fiber         | 55/30 Series      | 151 Lb.     |
| 285G    | 55-Gal. steel, 3-Pc Saddle     | Special           | 159 Lb.     |
| 285A-M  | 55-Gal. steel, Spark Resistant | 55/30M Series     | 149 Lb.     |

### ECONOMICAL DRUM MOVING AND POURING



#### 285 Series (Model 285A shown)

Just drive truck forks into the Karrier's fork pockets and drive to drum at ground level. When the drum holder meets the center of the drum, dismount and screw down safety locks to grip forks, then secure the drum by cinching the binder (shown below). Raise the carriage and travel to dumping location. Without leaving the seat, pull the chain loop for complete control of drum tilting. Model 285A-BP, provides a two-button pendant for battery powered drum tilt control. Tilt drum for dumping then rotate drum back to upright position. Drum can be fully inverted or controlled for desired rate of pouring. Fork Lift-Karrier detaches quickly, freeing the truck for other jobs.



Cinch Chain and Ratchet Hinge Plate secure drum on 285 and 285HD Series and Model 285A-BP.



Load Binders secure drum on Model 285A-GR with 2 chains and load binders.

55/30 Series Diameter Adaptors allow certain models with 55 gallon drum holders to fit smaller drums. For use with Model 285A, 285A-HD, 285A-HDPS, 285A/E, 285A/E-HD and 285A-BP.



| 55/30 SERIES DIAMETER ADAPTORS |               |             |
|--------------------------------|---------------|-------------|
| MODEL #                        | FITS DIAMETER | SHIP WEIGHT |
| 55/30-22                       | 21.5" to 22"  | 14 Lb.      |
| 55/30-20.5                     | 20" to 20.5"  | 23 Lb.      |
| 55/30-19                       | 18.5" to 19"  | 24 Lb.      |
| 55/30-17.5                     | 17" to 17.5"  | 24 Lb.      |
| 55/30-16                       | 15.5" to 16"  | 26 Lb.      |

55/30M Series Spark Resistant Adaptors and 55/30SS Series Stainless Steel Adaptors are also available for the same diameter ranges.

**Model E14 Fiber Drum Strap** replaces the cinch chain around the drum. It is for handling a fiber drum or straight walled steel drum. Use a Fiber Drum Strap with an appropriate size adaptor for smaller diameter fiber drum. E14 Fiber Drum Strap is NOT an adaptor for different diameter drum. It is standard equipment on Kontrol-Karriers designed for use with either a fiber or steel drum: Models 285A/E and 285A/E-HD.

**3-Piece Saddle** is a drum holder with 2 hinged metal bands and a clamp in the front to secure the drum. 3-piece saddle sized for standard 55-gallon 22-1/2" diameter steel drum is included on models 285G, 285G-HD, 285G-GR and 285GM-GR. It is also available on special order to fit a specific diameter fiber or metal drum.

Models with Spark Resistant Parts are available. Metals such as monel are substituted for drum holders, etc. Stainless steel cinch chain and brass pull-chain can replace steel chains. The letter "M" in the model # designates spark resistant parts made of monel. Models: 285A-M, 285AM-HD and 285GM-GR.



#### Model 285A-HDPS Heavy-Duty for Plastic or Steel Drum



Heavy-Duty Fork Lift-Karrier for plastic or steel drum has special drum holder with L-shape foot to support drum bottom and hold-down bracket to trap drum at top.

Handle 55-gallon plastic or steel drum 22-1/2" to 23-1/4" diameter and 34" to 39" tall. Use appropriate size 55/30 Series Diameter Adaptor for smaller diameter drum. Full drum capacity is 900 Lb. Half-full drum capacity\* is 450 Lb.

Ship dimensions: L 40" W 29" H 24"

For field conversion of a unit designed only for 55-gallon steel drum, order saddle assembly # 725APS-P to fit Model 285A or 745APS-P to fit Model 285A-HD.

#### Manual Tilt Control Options

Standard manual tilt Fork Lift-Karriers have chain wheel and 20' pull chain with 10' drop for high level pouring. Other manual tilt control options, in place of the chain wheel, are for pouring at operator level.

The new MORStop Tilt-Brake automatically stops and holds the drum tilt angle! It can be ordered as part # 3900i-P installed on 285 or 285HD Series Kontrol-Karriers or order part # 3900-P MORStop Kit for field installation.



The new MORStop Tilt-Brake eliminates drum tilting from an unbalanced drum or from weight-shift within a drum. The braking is immediate and self-actuating, without additional steps by the user. Option X01 includes the MORStop Tilt-Brake with a hand crank and gear covers.

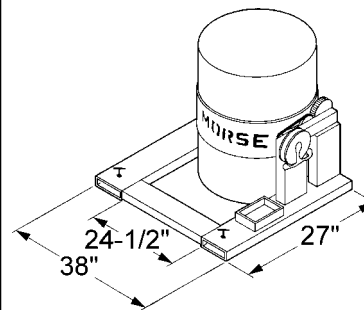
#### TILT CONTROL OPTIONS for 285 and 285HD SERIES

| OPTION   | DESCRIPTION  |
|----------|--|
| Standard | Chain wheel and pull chain, 20' loop, no gear covers |
| X01      | Hand crank, gear covers and MORStop Tilt-Brake       |
| X02      | Hand crank with gear covers                          |
| X03      | 16" Diameter hand wheel with gear covers             |
| X04      | Gear covers for pull chain equipped models           |

#### TILT CONTROL OPTIONS for 285GR SERIES

| OPTION   | DESCRIPTION  |
|----------|--|
| Standard | Chain wheel and pull chain, 20' loop, no gear covers |
| X02      | Hand crank   |
| X03      | 10" Diameter hand wheel with speed handle            |

#### 285 Series Dimensions



Fork pocket openings are 6-1/2" wide x 2-1/2" high. Fork pockets are 26-1/2" deep. Inside width between forks must be at least 24-1/2". Shipped assembled in durable carton. Special versions can be made for non-standard forks.

MORSE MFG. CO., INC.

Please contact your Morse dealer:



Interstate Products, Inc  
3921 Sawyer Rd, Sarasota FL 34233  
Call us toll free at 1-800-474-7294  
<http://store.interstateproducts.com>